

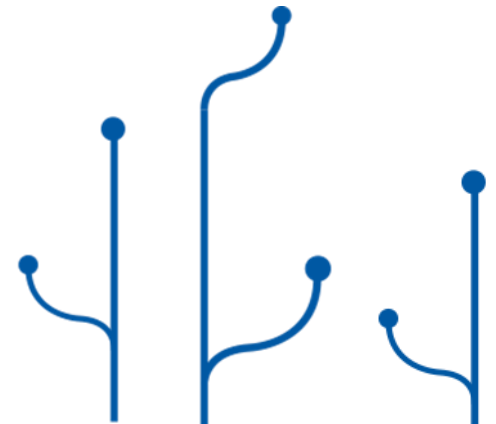
How to create a key pair

Objectives

- What is a key pair?
- Create a key pair
- Download a key pair

What is the key pair?

- A key pair is used in the authentication process when you want to log in to your virtual machine.
- If you choose a Ubuntu instance the key pair is important to log into the instance via ssh.
- Keep your key pair file safe for as long as you have an instance associated to it. Without the key pair, you will not be able to log into your instance.



Create a key pair



First you have to **log in** to the Wingu Cloud Dashboard. The Wingu Cloud Dashboard is used as an interface to interact with your virtual infrastructure.

Go to: <https://cloud.wingu.co.za/>



Type your **User Name** and **Password** then click the **Sign In** button

Log in

User Name

Password

Connect

After you have successfully logged in, click on the **Compute** dropdown menu on the left hand side of the screen, then select the **Access & Security** item.

- Project
- Compute
- Overview
- Instances
- Volumes
- Images
- Access & Security
- Network
- Orchestration
- Identity

Access & Security

Security Groups Key Pairs Floating IPs API Access

Filter

<input type="checkbox"/>	Name	Description	Actions
<input type="checkbox"/>	ICMP Ingress all ports	Allow Ping to all ports	<input type="button" value="Manage Rules"/>
<input type="checkbox"/>	default	Default security group	<input type="button" value="Manage Rules"/>

Displaying 2 items

Create a key pair continue...



Now, click on the **Key Pairs** tab in on the **Access & Security** page.
Now click on the **Create Key Pair** button.



The screenshot shows the 'Access & Security' page with the 'Key Pairs' tab selected. The page includes a sidebar with navigation options like Project, Compute, and Access & Security. The main content area displays a table of key pairs with columns for 'Key Pair Name' and 'Fingerprint'. A 'Filter' input field and buttons for '+ Create Key Pair', 'Import Key Pair', and 'Delete Key Pairs' are visible. The table contains one entry: 'TrainingKey' with fingerprint '29:43:d4:5c:06:39:2c:a3:4d:70:c5:0d:2c:d8:c2:dc'. An 'Actions' column contains a 'Delete Key Pair' button. Below the table, it says 'Displaying 1 item'.

<input type="checkbox"/> Key Pair Name	Fingerprint	Actions
<input type="checkbox"/> TrainingKey	29:43:d4:5c:06:39:2c:a3:4d:70:c5:0d:2c:d8:c2:dc	Delete Key Pair



This will open up the **Create Key Pair** Dialog

Fill in a name in the **Key Pair Name** field, then click the **Create Key Pair** button

Download a key pair

A screenshot of a 'Create Key Pair' dialog box. The title bar says 'Create Key Pair' with a close button. The form has two main sections: 'Key Pair Name *' with a text input field containing 'My_First_Key_Pair', and 'Description:' with explanatory text. At the bottom right, there are two buttons: 'Cancel' (yellow) and 'Create Key Pair' (blue).

Create Key Pair

Key Pair Name *

My_First_Key_Pair

Description:

Key pairs are ssh credentials which are injected into images when they are launched. Creating a new key pair registers the public key and downloads the private key (a .pem file).

Protect and use the key as you would any normal ssh private key.

Cancel Create Key Pair

Save your Key pair file in a known location on your computer and keep for future use.

Thank you

The key pair "My_First_Key_Pair" should download automatically. If not use the link below.

[Download key pair "My_First_Key_Pair"](#)

For Support log a call
at:
support@wingu.co.za

Thank you

For Support log a call
at:
support@wingu.co.za